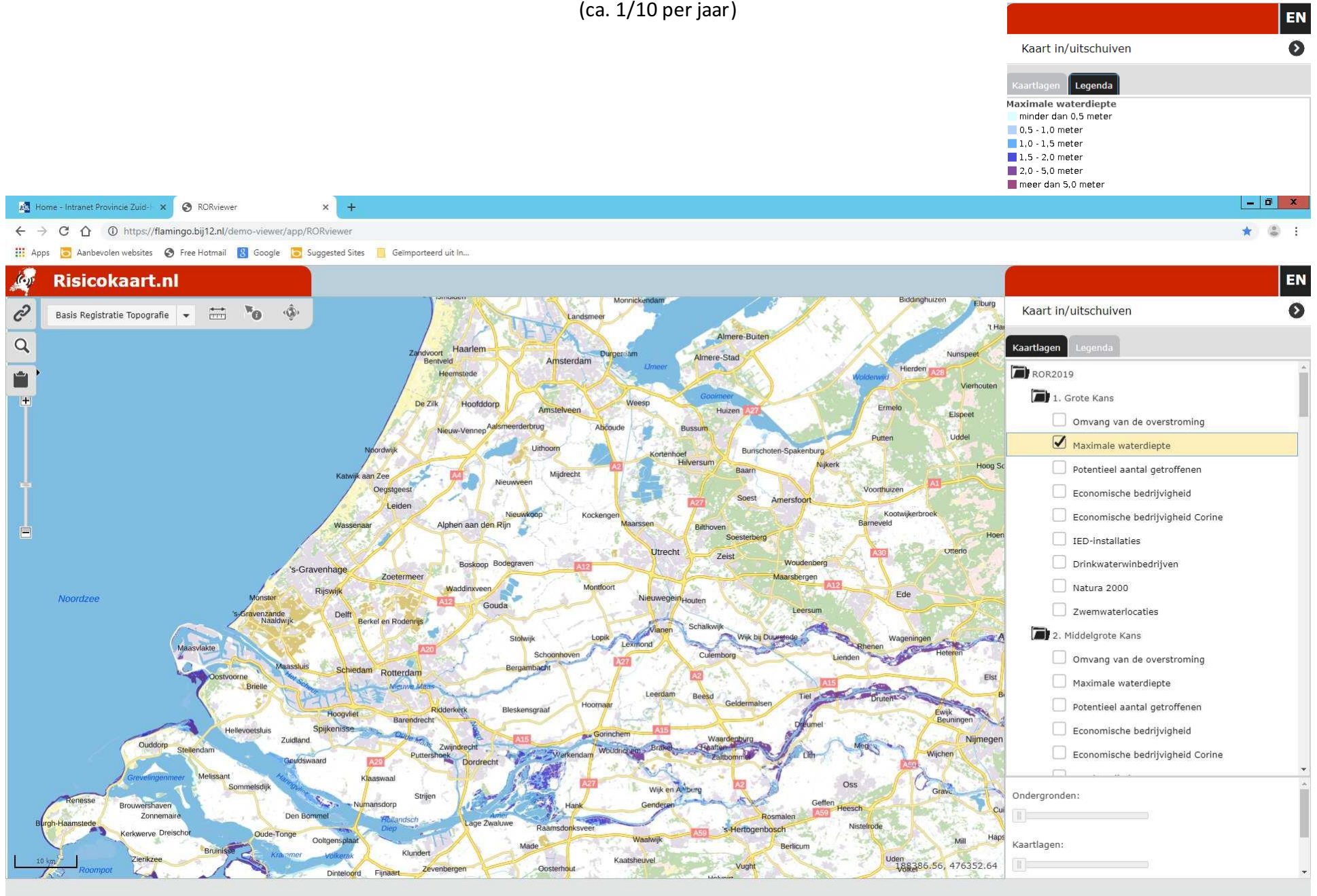


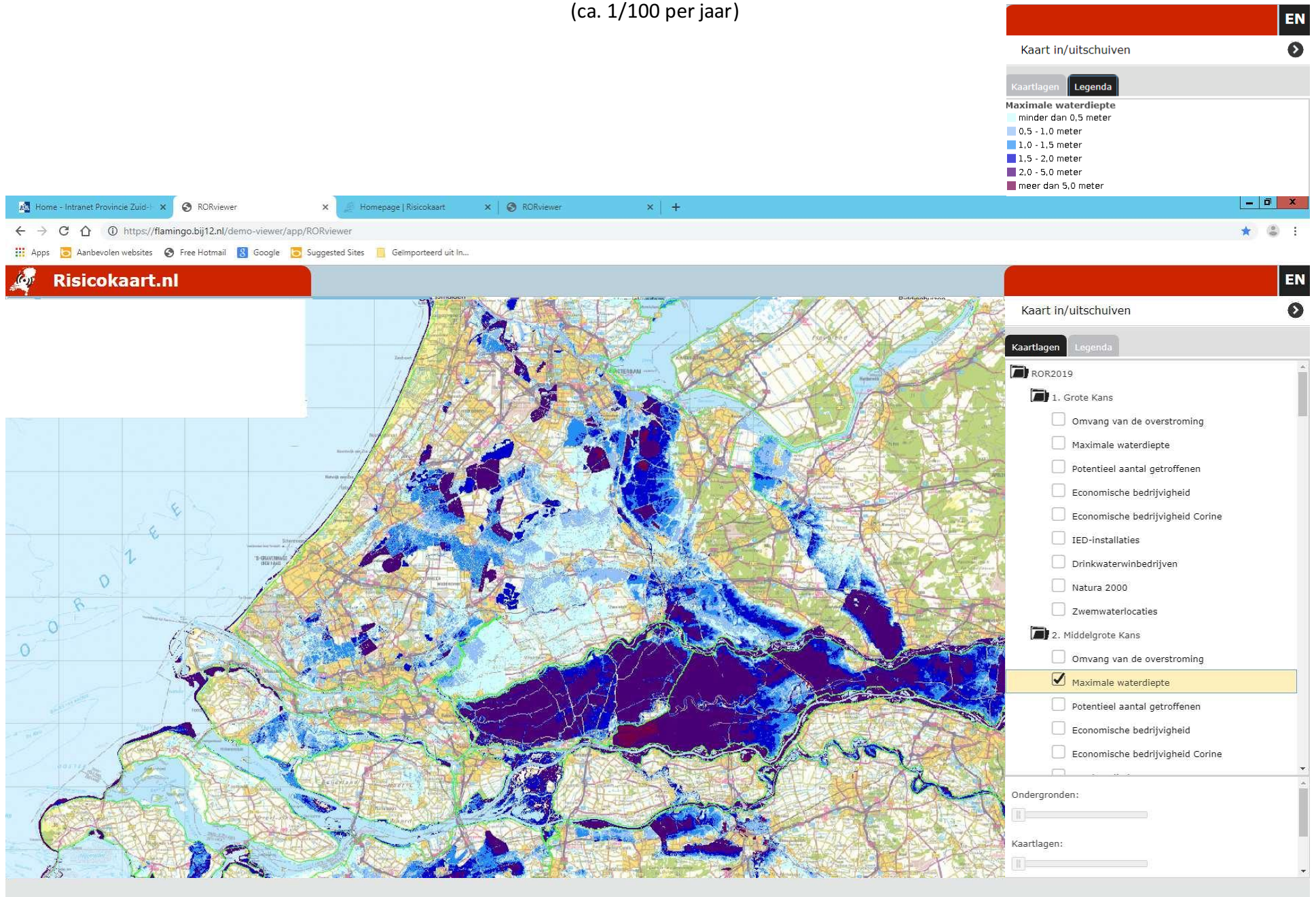
ROR2 eindconcept overstromingsgevaarkaart 1 "grote kans"

(ca. 1/10 per jaar)



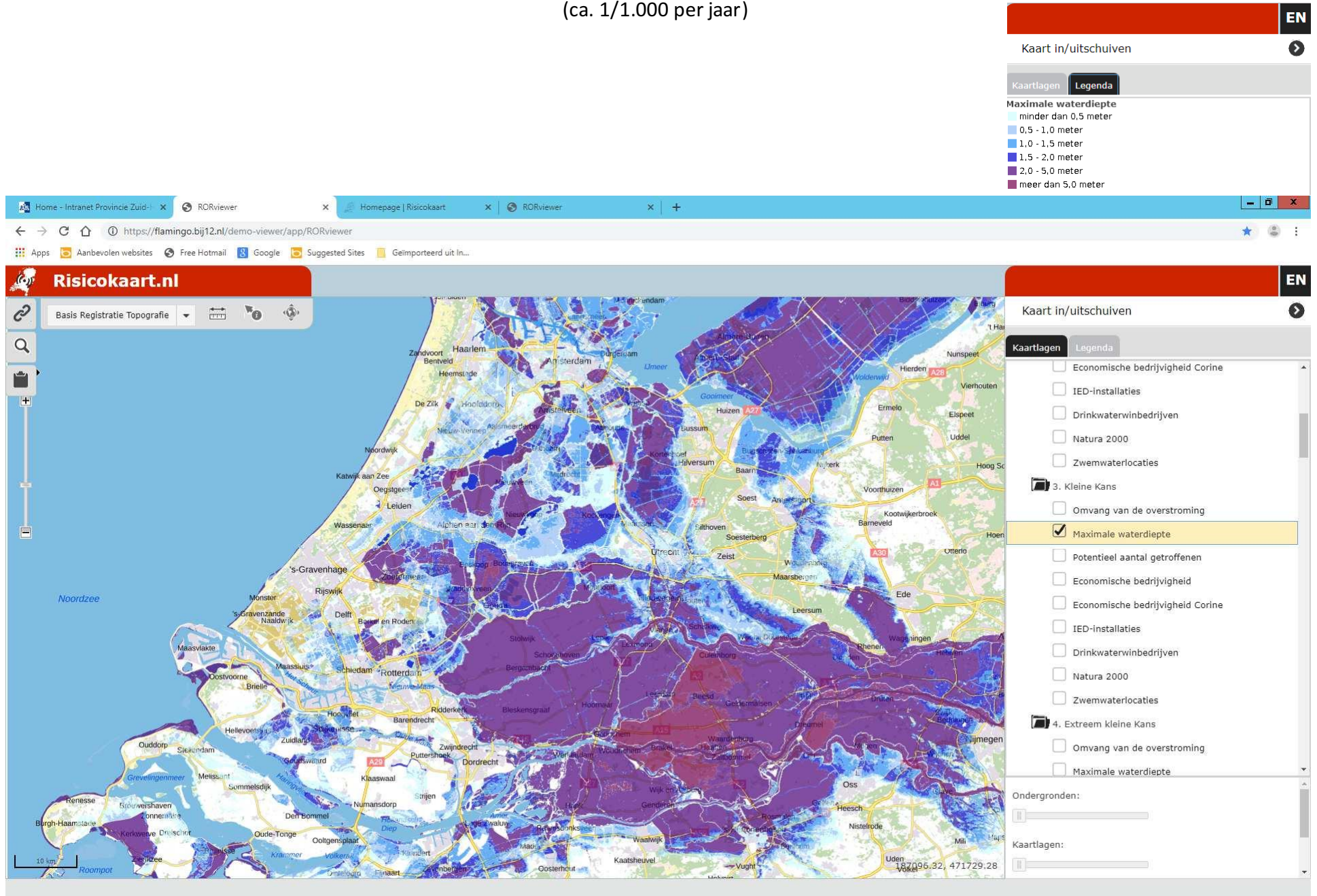
ROR2 eindconcept overstromingsgevaarkaart 2 “middelgrote kans”

(ca. 1/100 per jaar)



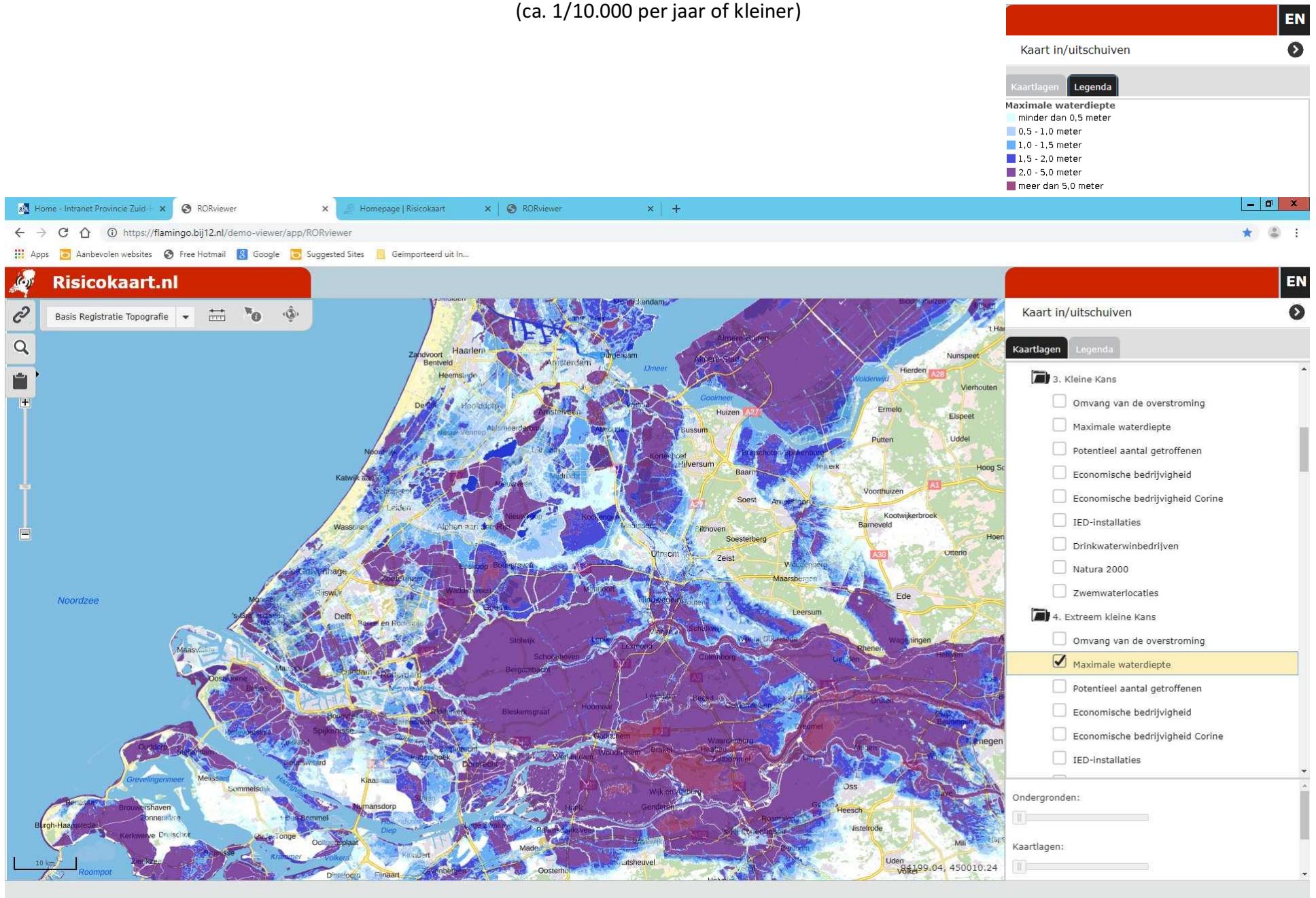
ROR2 eindconcept overstromingsgevaarkaart 3 “kleine kans”

(ca. 1/1.000 per jaar)



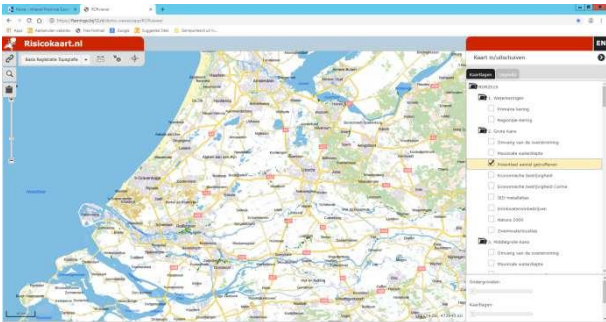
ROR2 eindconcept overstromingsgevaarkaart 4 “extrem klein kans”

(ca. 1/10.000 per jaar of kleiner)



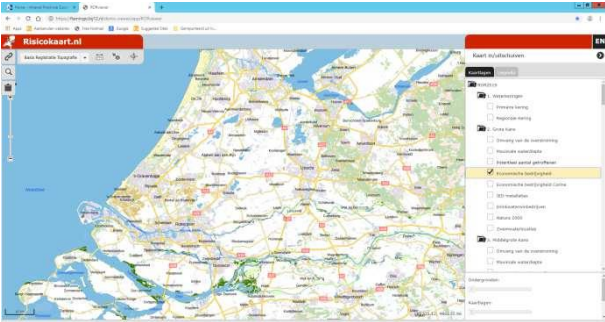
ROR2 eindconcept overstroomingsrisicokaarten “grote kans”

(ca. 1/10 per jaar)



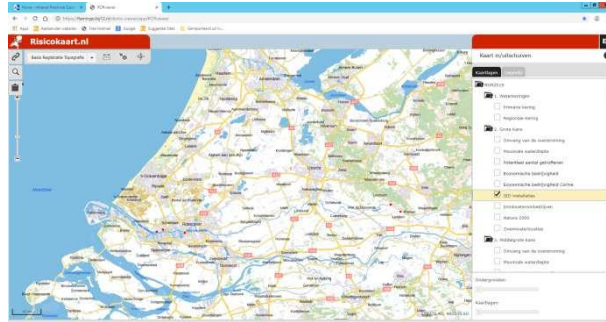
Potentieel aantal getroffen

- minder dan 5
- 5 - 10
- 10 - 50
- 50 - 100
- 100 - 500
- meer dan 500



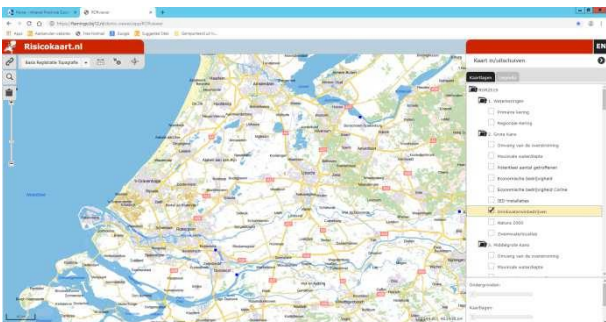
Economische bedrijvigheid

- agrarisch terrein
- bos-en natuurterrein
- werkterrein
- recreatieterrein
- infrastructuur
- woonterrein



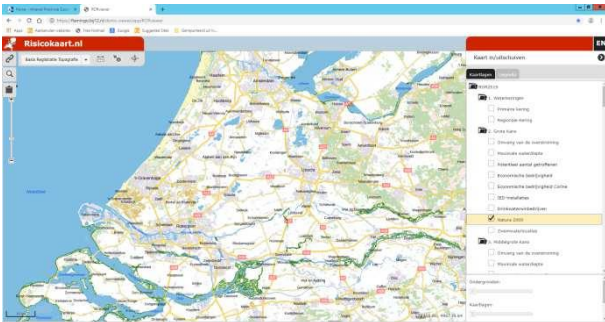
IED-installaties

- IPPC-bedrijven



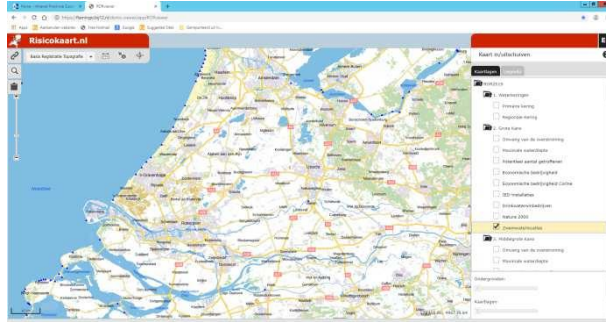
Drinkwaterwinbedrijven

- Drinkwater



Natura 2000

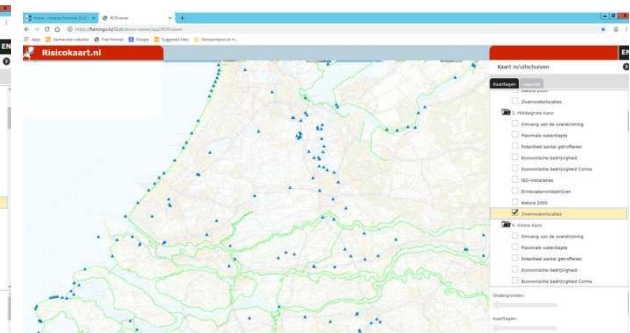
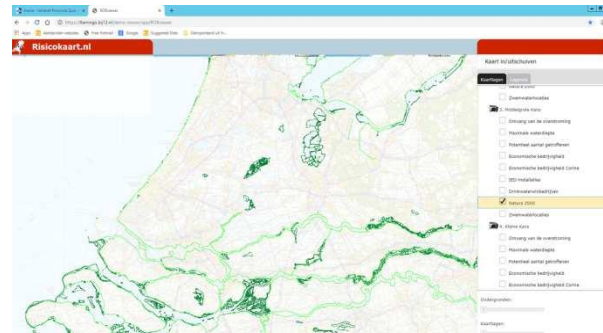
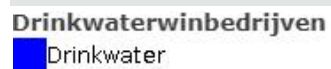
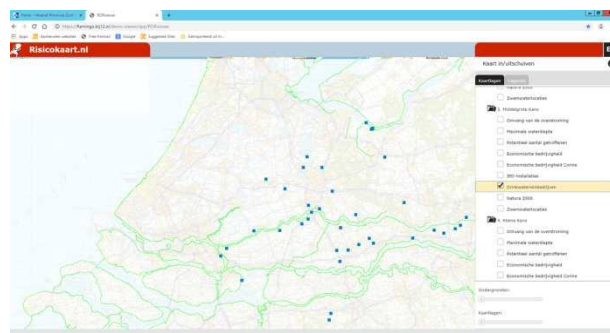
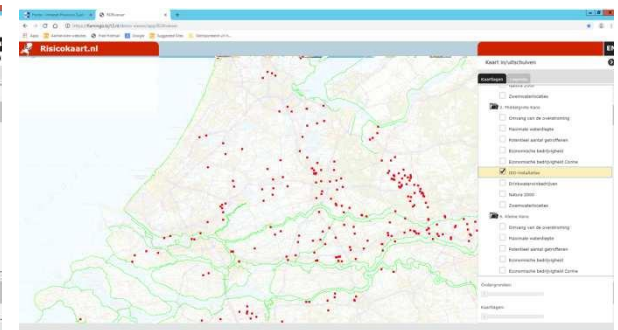
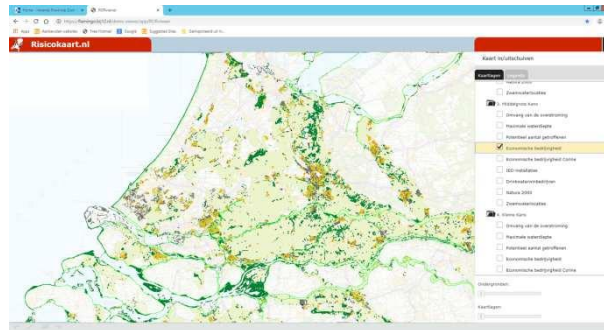
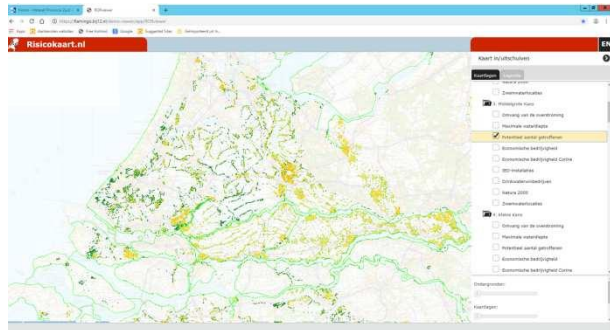
- Natura 2000



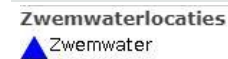
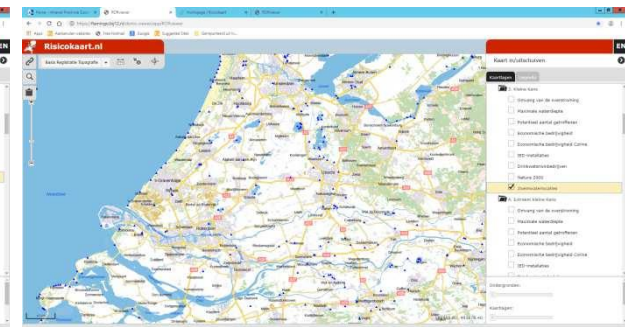
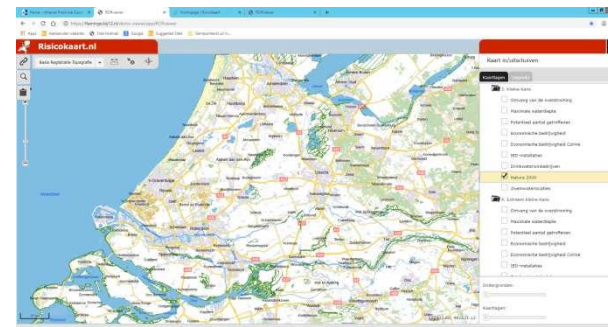
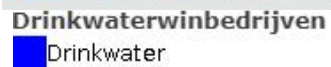
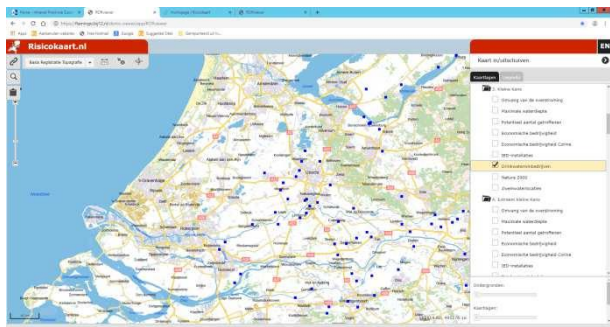
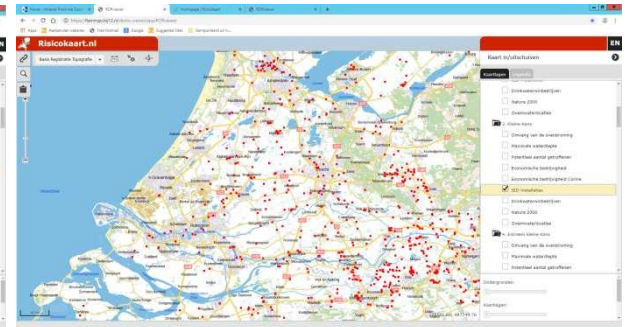
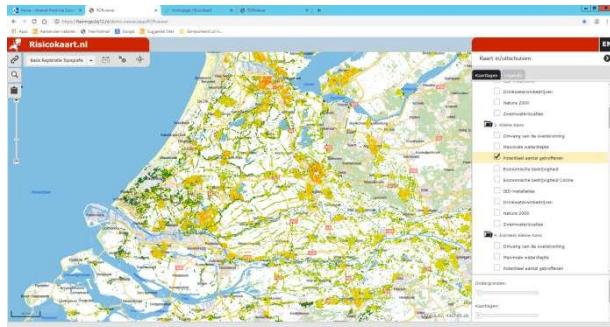
Zwemwaterlocaties

- Zwemwater

ROR2 eindconcept overstroomingsrisicokaarten “middelgrote kans” (ca. 1/100 per jaar)



ROR2 eindconcept overstroomingsrisicokaarten “kleine kans” (ca. 1/1.000 per jaar)



ROR2 eindconcept overstroomingsrisicokaarten “extremem kleine kans” (ca. 1/10.000 per jaar of kleiner)

